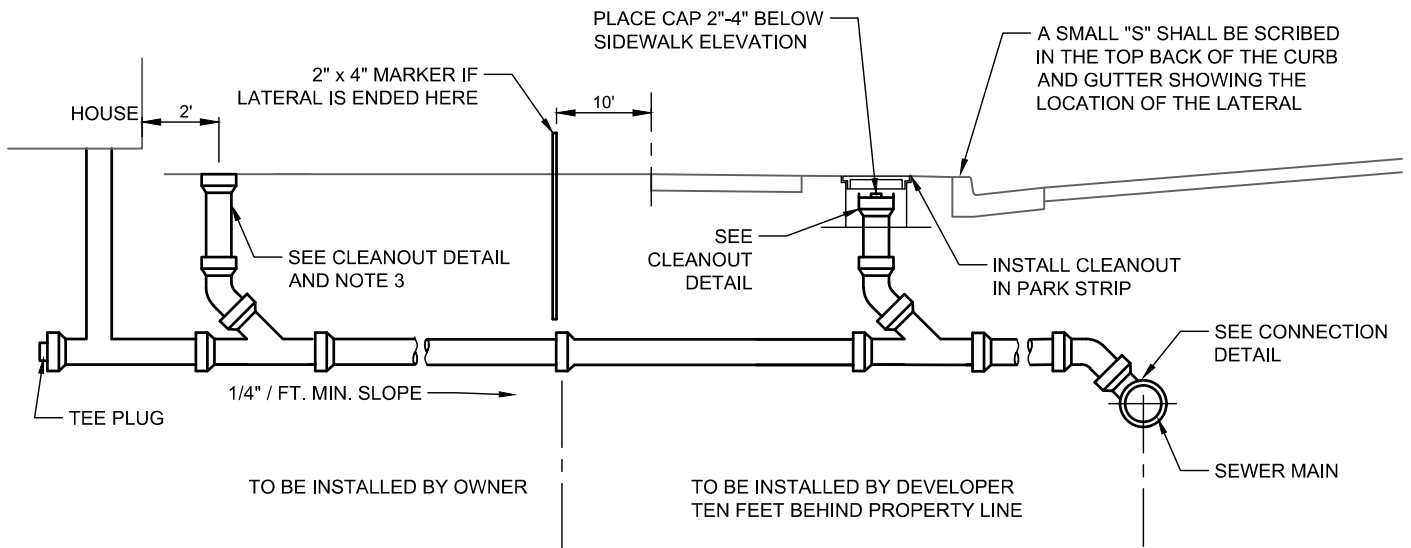


CLEANOUT DETAIL

CONNECTION DETAIL
ON EXISTING MAIN LINES
(SEE NOTE 6)



NOTES:

1. PIPE GRAPHICS DO NOT NECESSARILY INDICATE TYPE OF PIPE TO BE USED.
2. ALL PVC SEWER LATERAL PIPE AND FITTINGS WITHIN THE R.O.W. SHALL BE A MINIMUM OF SDR-26.
3. MAXIMUM SPACING BETWEEN CLEANOUTS IS 100' AND AT ALL BENDS.
4. MAXIMUM ALLOWED BEND IN LATERAL IS 22 1/2 DEGREES.
5. SEWER & WATER LATERALS ARE PROHIBITED IN COMMON TRENCH PER STATE CODE R 309-550-7.
6. "INSERTA TEE" MAY BE USED FOR CERTAIN CONDITIONS WITH PRIOR CITY ENGINEER APPROVAL.
7. WHEN APPROVED, "INSERTA TEE" INSTALLATION MUST BE WITNESSED, INSPECTED AND CERTIFIED BY AUTHORIZED CITY AGENTS
8. IN CERTAIN AREAS WHERE CONCERN FOR SEWER BACKUP EXISTS, A SEWER BACKFLOW PREVENTER (RECTORSEAL 97034) SHALL BE REQUIRED.
9. PIPE SLOPE SHALL BE 1/4" / FT MIN.

H:\Heber City\Std Dwg\2023 September\Std Dwg\SEWER-1_Updated.dwg - Lateral - 9/07/2023 03:41 pm - natalier



DATE:	09/23
SCALE:	N.T.S.
75 NORTH MAIN STREET HEBER CITY, UTAH 84032 (435) 654-0757	

SEWER LATERAL & DETAILS

SEWER-1