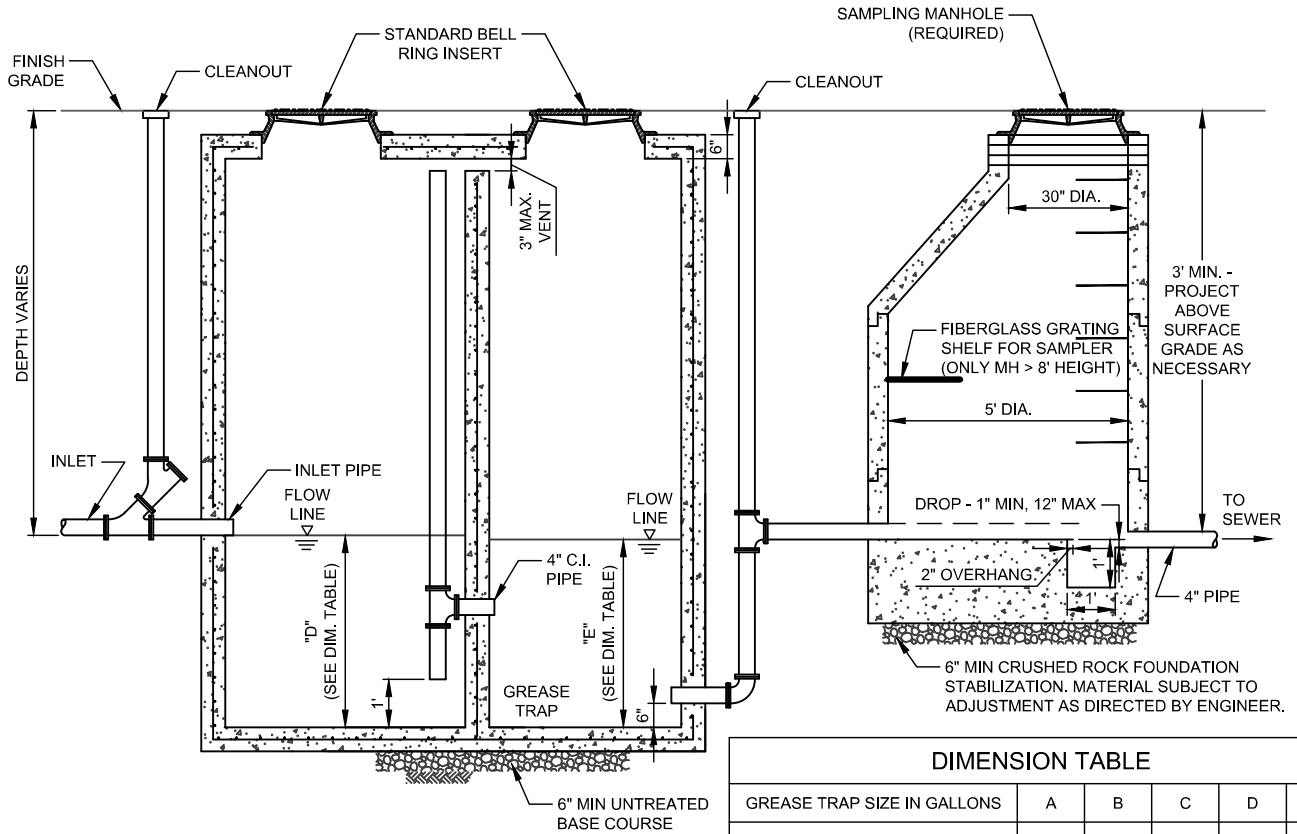


PLAN - GREASE TRAP TANK



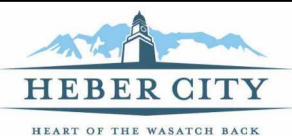
**SECTION A-A
GREASE TRAP TANK**

DIMENSION TABLE					
GREASE TRAP SIZE IN GALLONS	A	B	C	D	E
1500	5'-8"	4'-8"	5'-0"	4'-4"	4'-0"
1000	5'-0"	4'-0"	4'-0"	4'-0"	3'-11"
750	3'-1"	3'-1"	4'-0"	4'-2"	3'-10"

NOTES:

- CONCRETE SHALL HAVE A MINIMUM 28 DAY COMPRESSIVE STRENGTH OF 4000 PSI.
- REINFORCING STEEL SHALL BE ASTW A615 GRADE 60.
- THE CONCRETE COVER OVER THE REINFORCING STEEL SHALL BE A MINIMUM OF 1½ INCHES.
- THE STRUCTURE SHALL BE DESIGNED AND STAMPED BY A REGISTERED PROFESSIONAL ENGINEER LICENSED IN THE STATE OF UTAH.
- THE STRUCTURE SHALL BE DESIGNED FOR THE FOLLOWING LOADING CRITERIA:
 - WALLS DESIGNED FOR A SATURATED EQUIVALENT FLUID AT-REST SOIL PRESSURE OF 120 PCF PLUS TRUCK SURCHARGE.
 - TRUCK LOADING USING AN AASHTO H-20 TRUCK LOAD.
- THE MANWAY FRAME AND COVER SHALL BE A TRAFFIC TYPE CASTING FOR H-20 TRUCK LOAD.
- WHERE THE SEWER LINE ALREADY EXISTS, THE SEWER INVERT INTO AND OUT OF THE TANK SHALL BE 4'-0" ABOVE THE TANK FLOOR.
- PLUMBING OUTSIDE OF THE GREASE INTERCEPTOR WILL BE IN ACCORDANCE TO LOCAL REGULATIONS.
- THE BAFFLE INSIDE THE INTERCEPTOR SHALL BE WITHIN 3 INCHES OF THE CEILING.
- COVERS SHALL BE CIRCULAR AND SHALL BE SOLID WITH PICK HOLES FOR REMOVAL.
- THE INLET PIPE SHALL BE AT AN ELEVATION OF 1 INCH OR HIGHER THAN THE OUTLET PIPE.
- SANITARY WASTES FROM TOILETS SHALL NOT BE PLUMBED TO GREASE INTERCEPTORS.
- PIPING AS PER CITY OR SANITARY DISTRICT REQUIREMENTS.
- PROVIDE A SEPARATE VENT LINE AS REQUIRED BY THE INTERNATIONAL PLUMBING CODE.

H:\Heber City\Std Dwg\2023\September\Std Dwg\SEWER-6.dwg - Grease Interceptor - 9/07/2023 03:41pm - natalie



DATE: 02/19
 SCALE: N.T.S.
 75 NORTH MAIN STREET
 HEBER CITY, UTAH 84032
 (435) 654-0757

GREASE INTERCEPTOR

SEWER-6