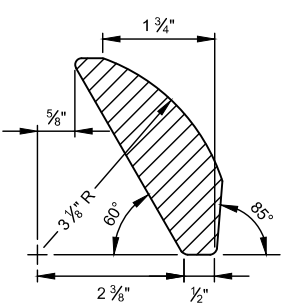
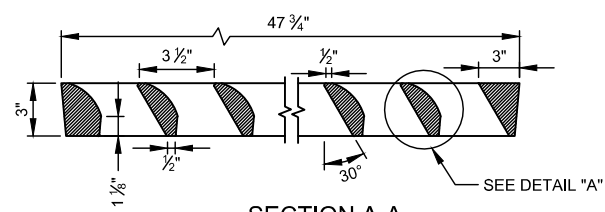


GRATE

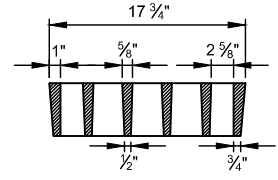
WEIGHT: 266 LBS.



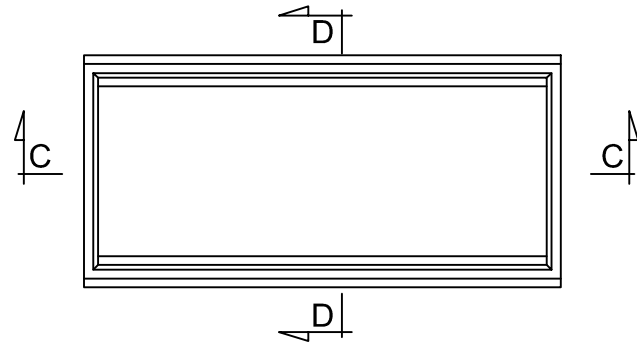
DETAIL "A"



SECTION A-A

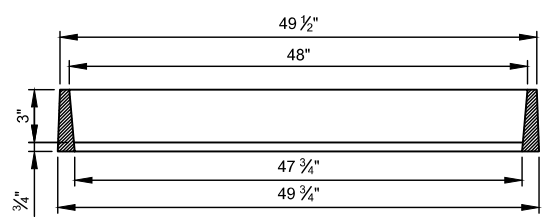
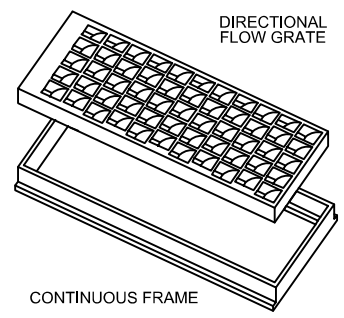


SECTION B-B

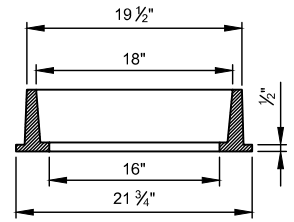


FRAME

WEIGHT: 160 LBS.



SECTION C-C



SECTION D-D

NOTES:

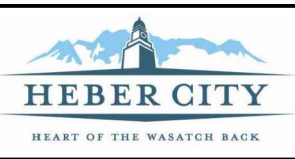
1. ALL DIMENSIONS ARE INCHES (in) UNLESS OTHERWISE NOTED.
2. GRATE AND FRAME MAY BE FURNISHED IN EITHER DUCTILE IRON (ASTM A-536 GRADE 60) OR CAST GRAY IRON: AASHTO M-105, CLASS 30 B (ASTM A-48).
3. INSTALLATION REQUIRES SUPPORT UNDER LONGITUDINAL AXIS OF FRAME. ORIENT GRATE WITH DIRECTION OF FLOW.
4. GRATE & FRAME SHALL BE D&L I-1803 OR APPROVED EQUAL.

DESIGN DATA:

MS 18 (HS-20) OR INTERSTATE ALTERNATE LOADING IN ACCORDANCE WITH CURRENT AASHTO AND INTERIM SPECIFICATIONS.

DUCTILE IRON AND STRUCTURAL STEEL: $f_s=138$ MPa

H:\Heber City\Std Dwg\2023 September\Std Dwg\STORM DRAIN-2.dwg - Grate Frame - 9/07/2023 03:41pm. natalier



DATE: 03/17
 SCALE: N.T.S.
 75 NORTH MAIN STREET
 HEBER CITY, UTAH 84032
 (435) 654-0757

GRATE & FRAME

DRAIN-2