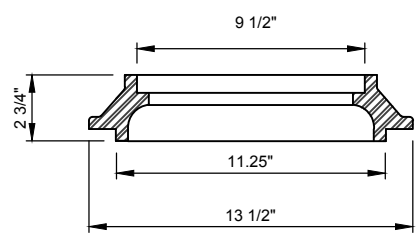
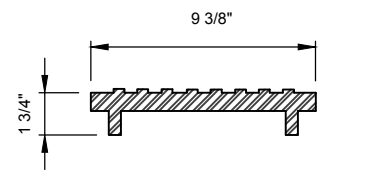
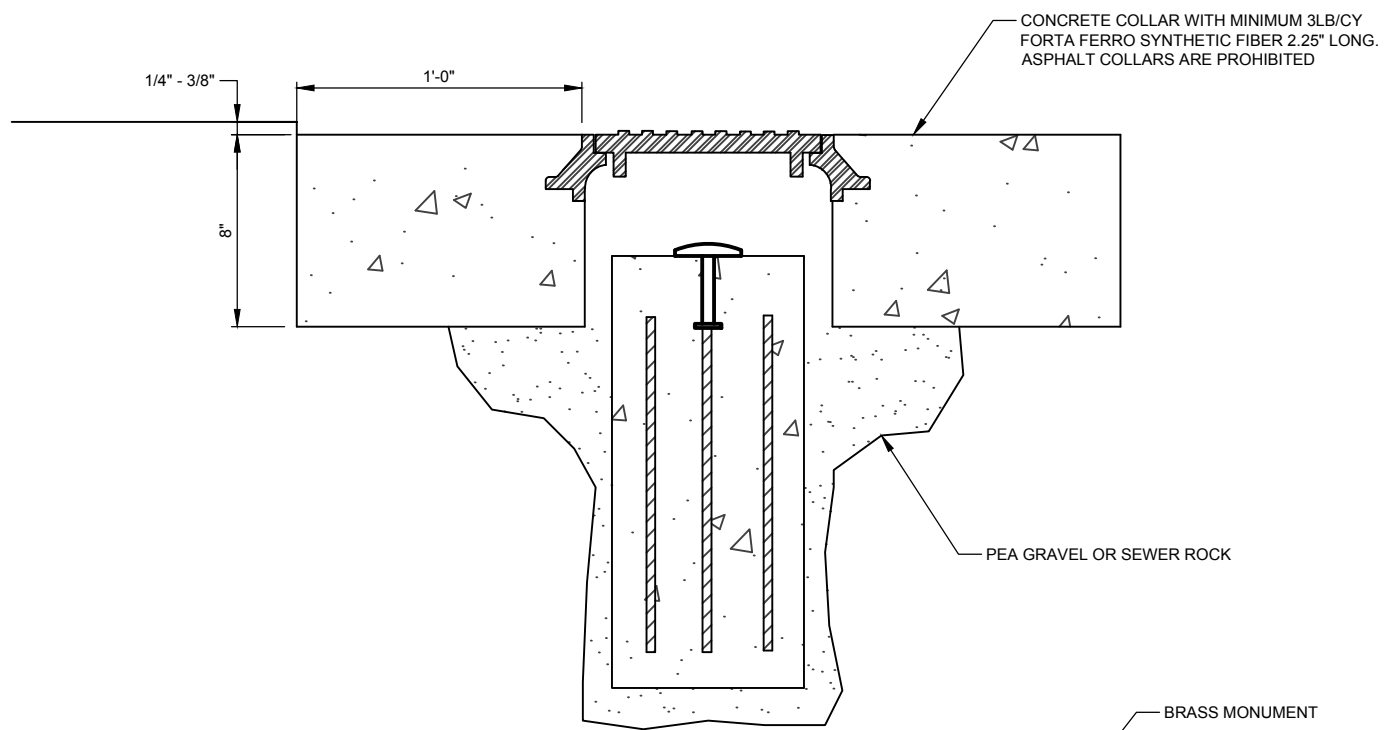
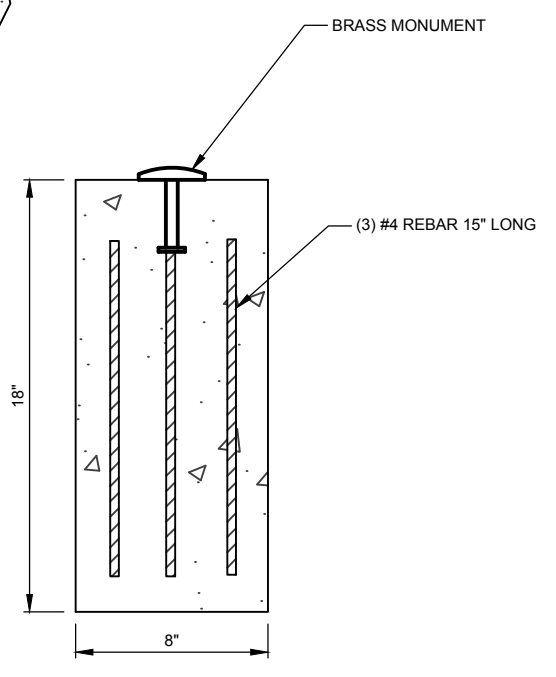


V:\ENGR\StdSpec\StdSpec 2019\Drawg Files\STREETS-11.dwg - Survey - 2/06/2019 11:58am - r.funk



D & L SUPPLY # K-6313 OR APPROVED EQUAL

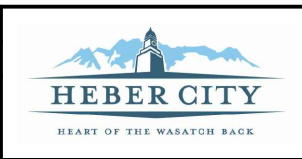


- NOTES:**
1. CAP SHOULD BE MARKED WITH CROSS ON WHICH LOCATION CORRESPONDS WITH RECORD OF SURVEY FILED WITH THE COUNTY.
 2. CONCRETE BASE FOR THE SURVEY MONUMENT SHOULD BE INDEPENDENT OF CONCRETE COLLAR OF LID TO MINIMIZE VIBRATIONS TO MONUMENT.
 3. CONCRETE BASE SHOULD BE INSTALLED USING PEA GRAVEL OR SEWER ROCK.
 4. CONCRETE COLLAR TO HAVE TWO #4 BAR CONTINUOUS AROUND COLLAR WITH 12" OVERLAP.
 5. CONCRETE COLLAR SHOULD BE 1/4" LOWER THAN SURROUNDING PAVEMENT.
 6. LOCATE AT CENTERLINE OF INTERSECTIONS AND CUL-DE-SACS

SURVEY MONUMENTS

HORROCKS ENGINEERS
 728 WEST 100 SOUTH #2
 HEBER CITY, UTAH 84032
 (435) 654-2226

DATE: FEBRUARY 2019
SCALE: N.T.S.
75 NORTH MAIN STREET HEBER CITY, UTAH 84032 (435) 654-0757



**HEBER CITY
STANDARD DRAWING**

STREETS-11