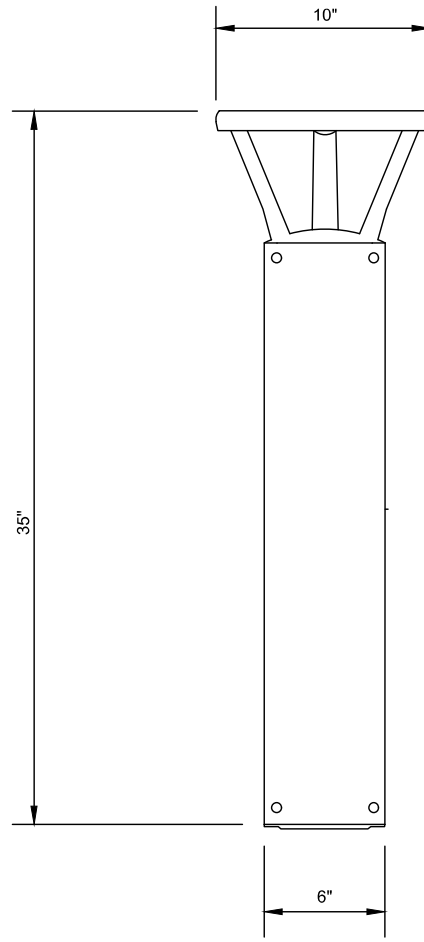


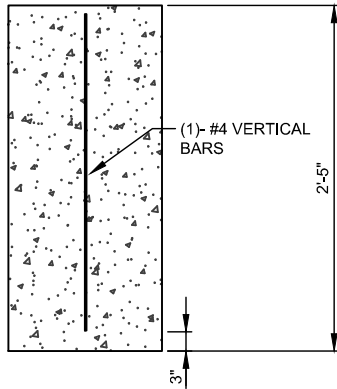
ANCHOR BOLT DETAIL



PLB - 102

NOTES:

1. TRAIL BOLLARD SHALL BE PLB SERIES SOLAR POWERED LED BOLLARD MODEL PLB 102 BK ASM WW 00 SEC BY FIRSTLIGHT TECHNOLOGIES

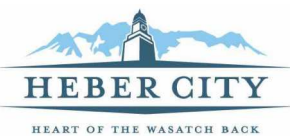


CONCRETE BASE

NOTES:

1. CONCRETE SHALL BE CLASS 3000 MIN PER SECTION 033014
2. CONCRETE BASES SHALL BE BACKFILLED WITH SUITABLE MATERIAL COMPACTED TO 95 PERCENT
3. THE TOP OF THE CONCRETE BASE SHALL BE 1 TO 2 INCHES ABOVE THE ADJACENT GRADE.

H:\Heber City\Std Dwg\2023 September\Std Dwg\STREETS-14 Updated.dwg - Trail Lighting - 9/07/2023 03:43pm, natalier



DATE:	09/23
SCALE:	N.T.S.
75 NORTH MAIN STREET HEBER CITY, UTAH 84032 (435) 654-0757	

TRAIL LIGHTING

STREETS-14